

Early Abacus (Hempire)



Sunshine Hemp

1500 Orange Avenue
St. Cloud, FL 34769
www.sunshinehempfl.com

Order ID#: 200521003
Lab Code#: 200521003-016
Product Type: Flower
Lot/Batch: NA
Initial Weight (g): 10.1

Sample date: 13-May-2020
Sample received: 21-May-2020
Completed: 12-Jun-2020
Report expires: 12-Jun-2021

CANNABINOIDS

Analysis Batch: WO-20052104
Analysis Date: Friday, May 22, 2020

Test Method: SOP 6.6
Instrument: Agilent HPLC, Instrument 33

Analyte	% ^a	mg/g
THCA-A	0.231	2.306
Δ9-THC	0.0640	0.6399
CBDA	4.83	48.32
CBD	0.400	4.003
CBN	ND	ND
CBDV	ND	ND
Δ8-THC	ND	ND
THCV	ND	ND
CBG	ND	ND
CBGA	0.0787	0.787
CBC	0.0311	0.3111

Total: 5.64 56.36

^a Detection Level = 0.03% by dry-weight.

^b THC is calculated as %THC + (%THCA × 0.877).

^c CBD is calculated as %CBD + (%CBDA × 0.877).

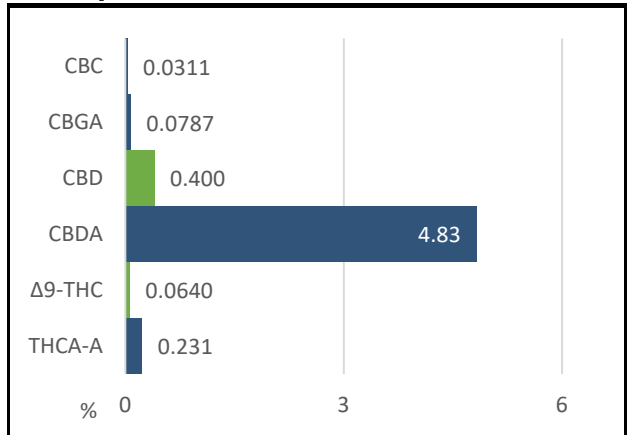
^d The absolute sum of all cannabinoids above the level of detection.

Total THC^b
0.266%
PASS

Total CBD^c
4.64%

TOTAL^d
5.64%

Potency Profile



MOISTURE



4.9%

Analysis Date: 5/22/2020

Test Method: SOP 6.12

Comments:

Revised to correct calculations.



Authorization

YoungChul Park, Ph.D., Laboratory Director
Approval Date: 12-Jun-2020

Test results are based solely upon the test article submitted to Americanna Laboratories, LLC in the condition it was received. Americanna Laboratories, LLC warrants that all analytical work was conducted in a professional manner in accordance with the requirements of ISO/IEC 17025:2017, such as comparison to Certified Reference Materials and NIST traceable Reference Standards. This report shall not be reproduced, except in its entirety, without the written approval of Americanna Laboratories, LLC. Test results are confidential unless explicitly waived. Void after 1 year from test end date.

ND=Not Detected, NT=Not Tested, ppm=Parts Per Million, ppb=Parts Per Billion. Limit of Detection (LOD) and Limit of Quantitation (LOQ) are terms used to describe the smallest concentration that can be reliably measured by an analytical procedure.

- end of report -