

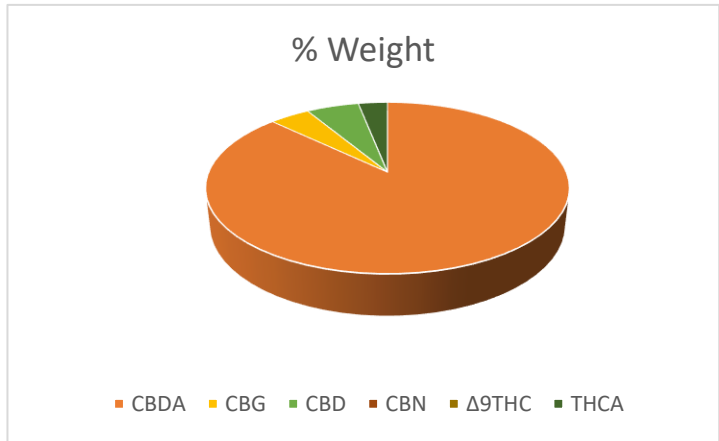
**Product Description**

Client:  
Address:  
  
Product: Flower  
Name: Early Abacus Flower  
Date Collected: 02.10.20  
Date Received: 02.10.20  
Report Date: 02.11.20

Reported By: BMH  
Approved By: JBH



**Cannabinoid Potency & Moisture Analysis**



Analyte	% Weight
CBDA	13.5
CBG	0.7
CBD	0.8
CBN	0.0
Δ9THC	0.0
THCA	0.3
<b>TOTAL</b>	<b>15.2</b>

**14.3 %**  
**Total CBD\*\*\***  
**(Calculated Decarboxylated Potential)**

**0.3 %**  
**Total THC\*\*\***  
**(Calculated Decarboxylated Potential)**

**15.2 %**  
**Total Cannabinoid**

Notes:

\*Total CBD = (CBDA x 0.877) + CBD

\*Total THC = (THCA x 0.877) + THC

\*Adjusted for loss of carboxylic acid group

**Screening Test: Industrial Hemp**

**HXX Labs**

License #: AG-R1058719IHH  
33972 Texas St, Albany, OR, 97321

